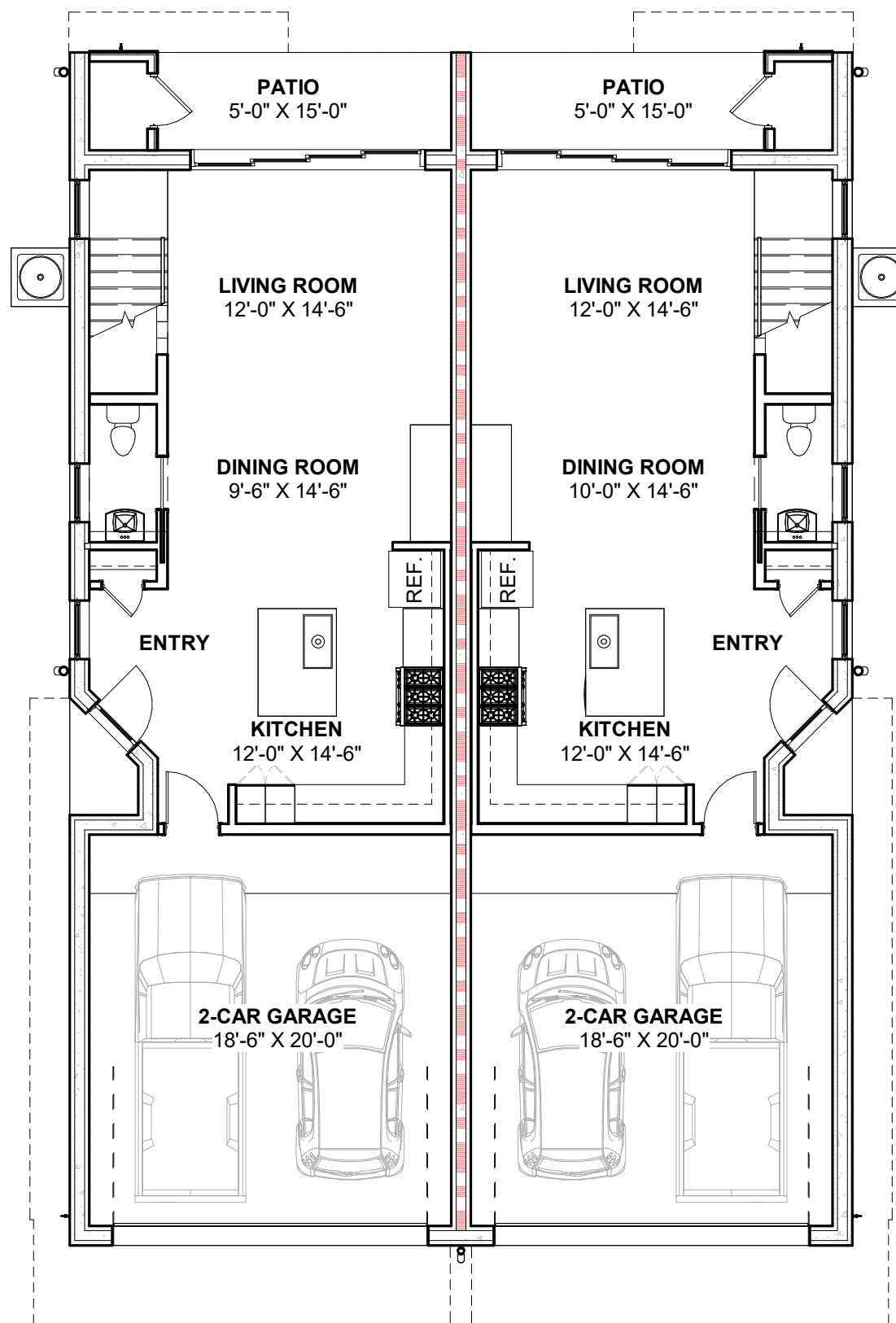


AREA SYNOPSIS

FIRST FLOOR	601 SF
SECOND FLOOR	1,126 SF
TOTAL LIVING AREA (NET)	1,727 SF
TOTAL SLAB AREA (GROSS)	1,220 SF

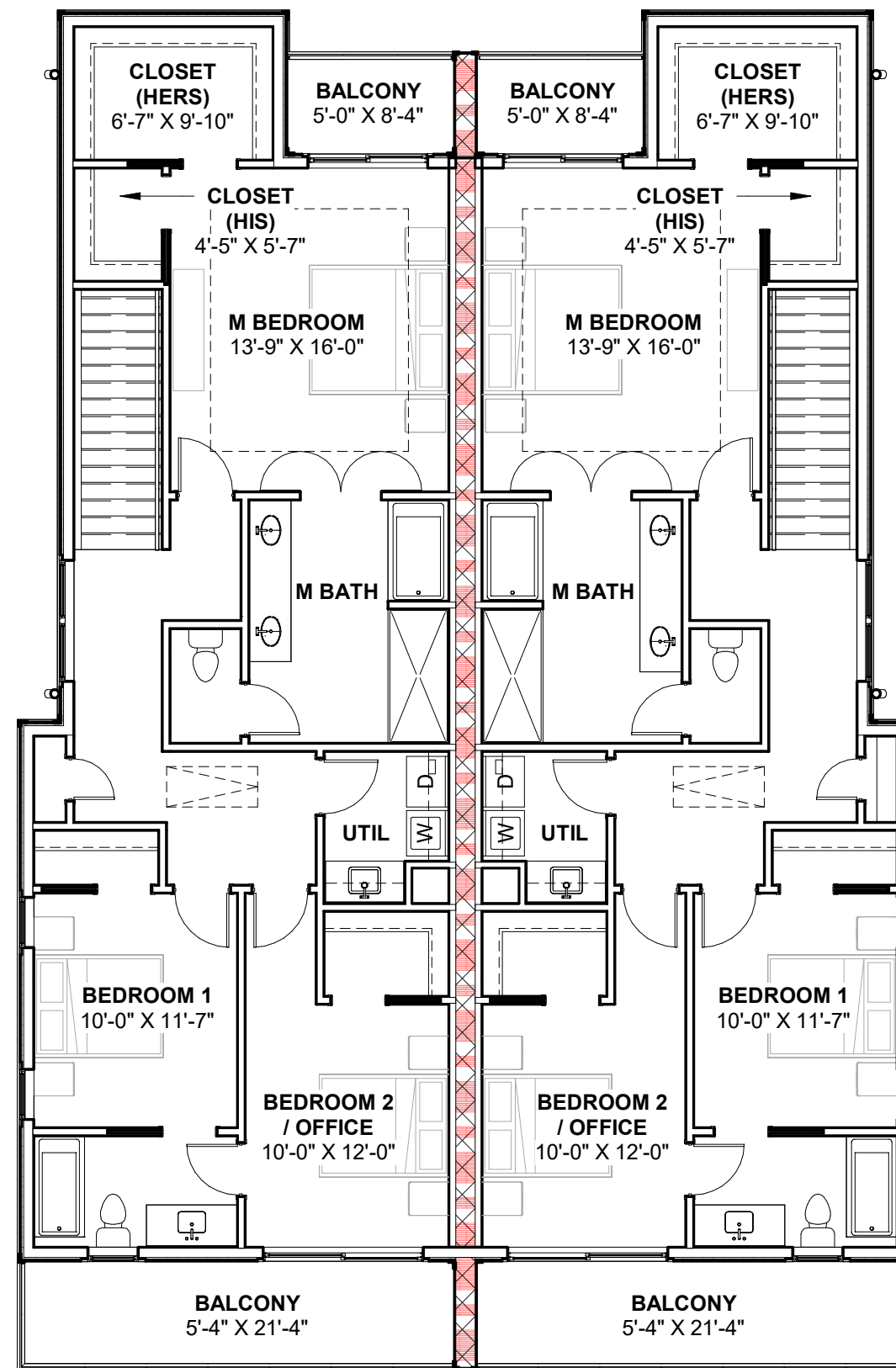
IMPERVIOUS COVERAGE CALCULATION

LOT SIZE	25' X 100' = 2,500 SF
PERVIOUS AREA (GRASS)	680 SF
PERVIOUS AREA (PAVERS)	208 SF
IMPERVIOUS AREA	2,500 SF - 888 SF = 1,612 SF
IMPERVIOUS %	$(1,612 \div 2,500) \times 100 = 64.5\%$



FIRST FLOOR

SCALE - 1/8" = 1'-0"



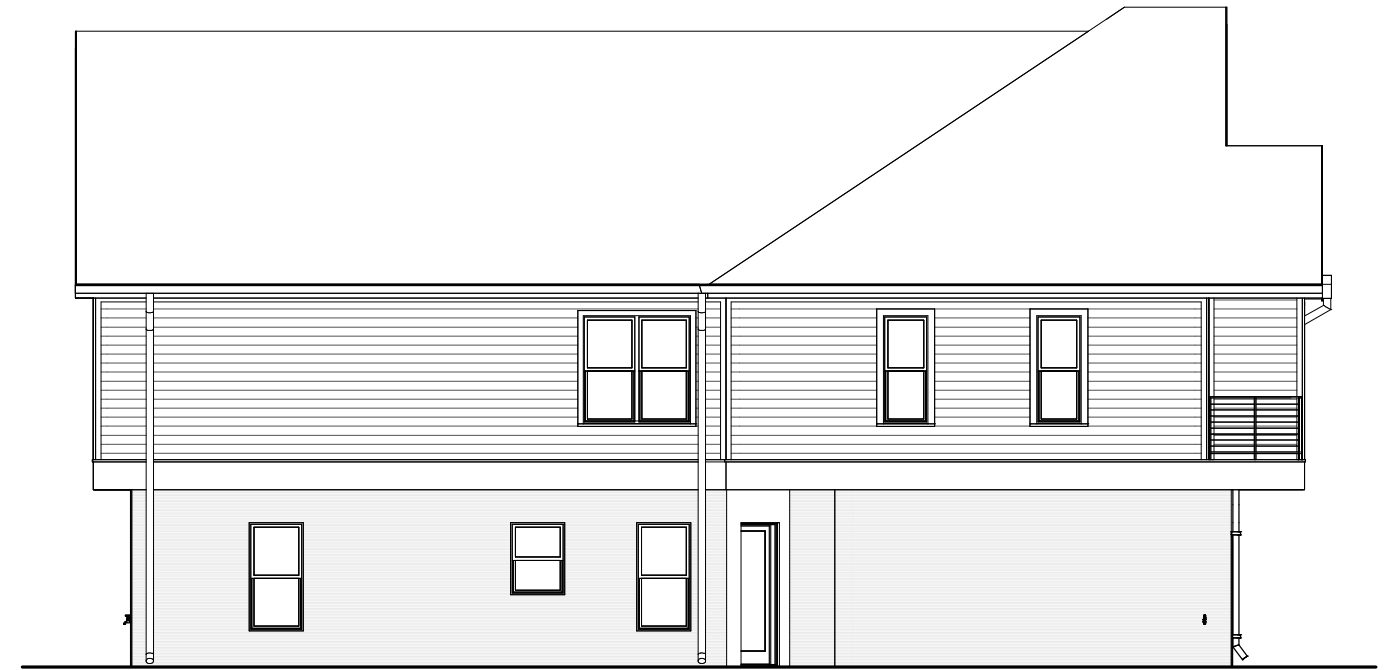
SECOND FLOOR

SCALE - 1/8" = 1'-0"



BACK ELEVATION

SCALE - 3/32" = 1'-0"



SIDE ELEVATION

SCALE - 3/32" = 1'-0"



FRONT ELEVATION

SCALE - 3/32" = 1'-0"

